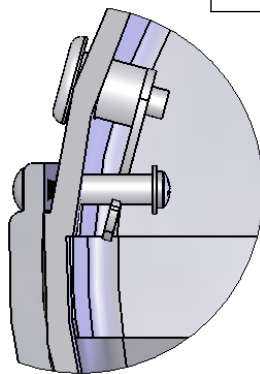
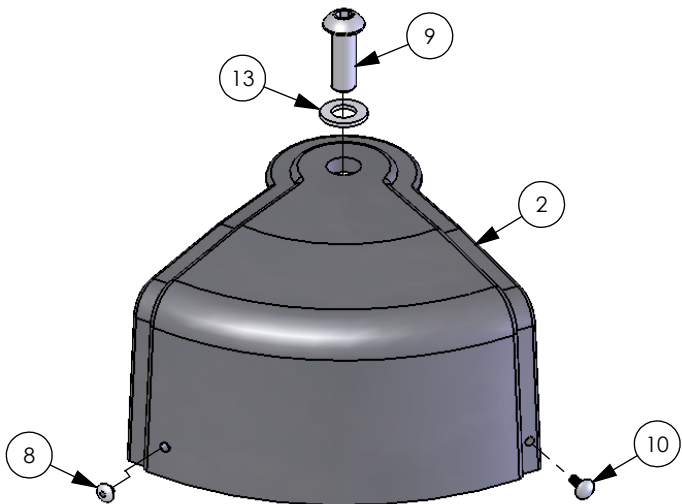
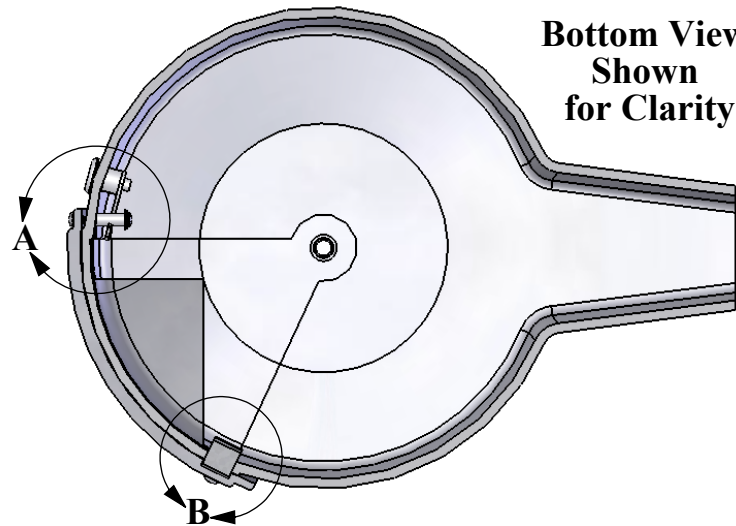


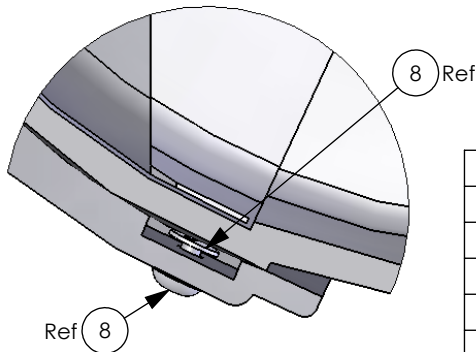
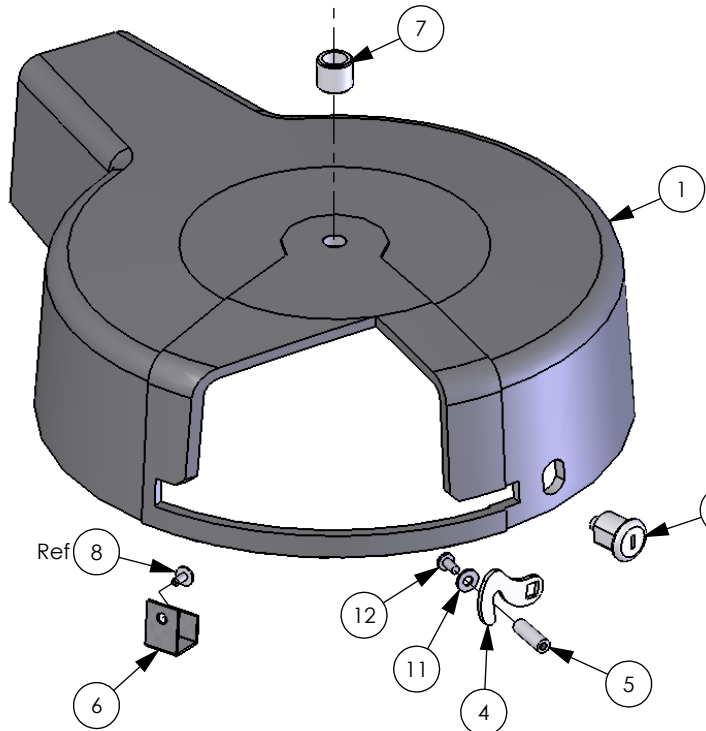
| REVISIONS | | | | |
|-----------|-----|--|-----------------|------------------|
| EO | REV | DESCRIPTION | Drawn | APPR |
| --- | A | Production Release | Sal 11/08/07 | D.C. 12/12/07 |
| --- | B | Item 9 Was: 2616-580 Nut Barrel 5/16-18 Thread | Sal 02/13/08 | D.C. 02/13/08 |



DETAIL A
SCALE 1 : 2



**Bottom View
Shown
for Clarity**



DETAIL B
SCALE 1 : 1.5
(Item 6 Removed to
Identify Item 8 Positions)

| ITEM | PART NUMBER | DESCRIPTION | QTY |
|------|-------------|-----------------------------------|-----|
| 1 | 6500-210 | Cover Turret | 1 |
| 2 | 6500-215 | Cover Access Turret | 1 |
| 3 | 4001-035 | Lock N16058BDxSfx2K Key 16120 | 1 |
| 4 | 1702-507 | Cam "J" Hook | 1 |
| 5 | 2900-916 | Standoff 10-32 x 1" Alum | 1 |
| 6 | 6500-280 | Clip Access Cover | 1 |
| 7 | 6500-275 | Spacer Steel .75ODx.53IDx..65L | 1 |
| 8 | 2616-581 | Nut Barrel Type 10-32 Thd SS | 1 |
| 9 | 2615-883 | Bolt Button Socket 1/2-13 x 1 1/2 | 1 |
| 10 | 2615-605 | Bolt Carriage 10-32 x 1/2 | 1 |
| 11 | 2620-010 | Washer #10 SAE | 1 |
| 12 | 2616-051 | Screw Phillips Head 10-32 x 3/8 | 1 |
| 13 | 2620-060 | Washer Plastic Seal 1/2" Bolt | 1 |

UNLESS OTHERWISE SPECIFIED:
DIMENSIONS ARE IN INCHES

TOLERANCES:
ANGULAR ± 1°
X.X ± 0.060
X.XX ± 0.020
X.XXX ± 0.007

INTERPRET GEOMETRIC
TOLERANCING PER:

Material: Noted

Finish: Noted

NEXT ASSY

APPLICATION

DO NOT SCALE DRAWING

| NAME | DATE |
|-------------|----------|
| Sal Briones | 11/08/07 |
| | |
| | |
| | |
| | |

| TITLE: |
|-------------------|
| Cover Turret Assy |

| SIZE | DWG. NO. | REV |
|------|----------|-----|
| A | 6500-440 | B |

| SCALE: | SHEET | OF | TOTAL |
|--------|-------|----|-------|
| 1:10 | 1 | 1 | 1 |

Notes: Unless Otherwise Specified.

PROPRIETARY AND CONFIDENTIAL
THE INFORMATION CONTAINED IN THIS
DRAWING IS THE SOLE PROPERTY OF
DOOR KING SYSTEM. ANY REPRODUCTION
IN PART OR AS A WHOLE
WITHOUT THE WRITTEN PERMISSION OF
DOOR KING SYSTEM IS PROHIBITED.