

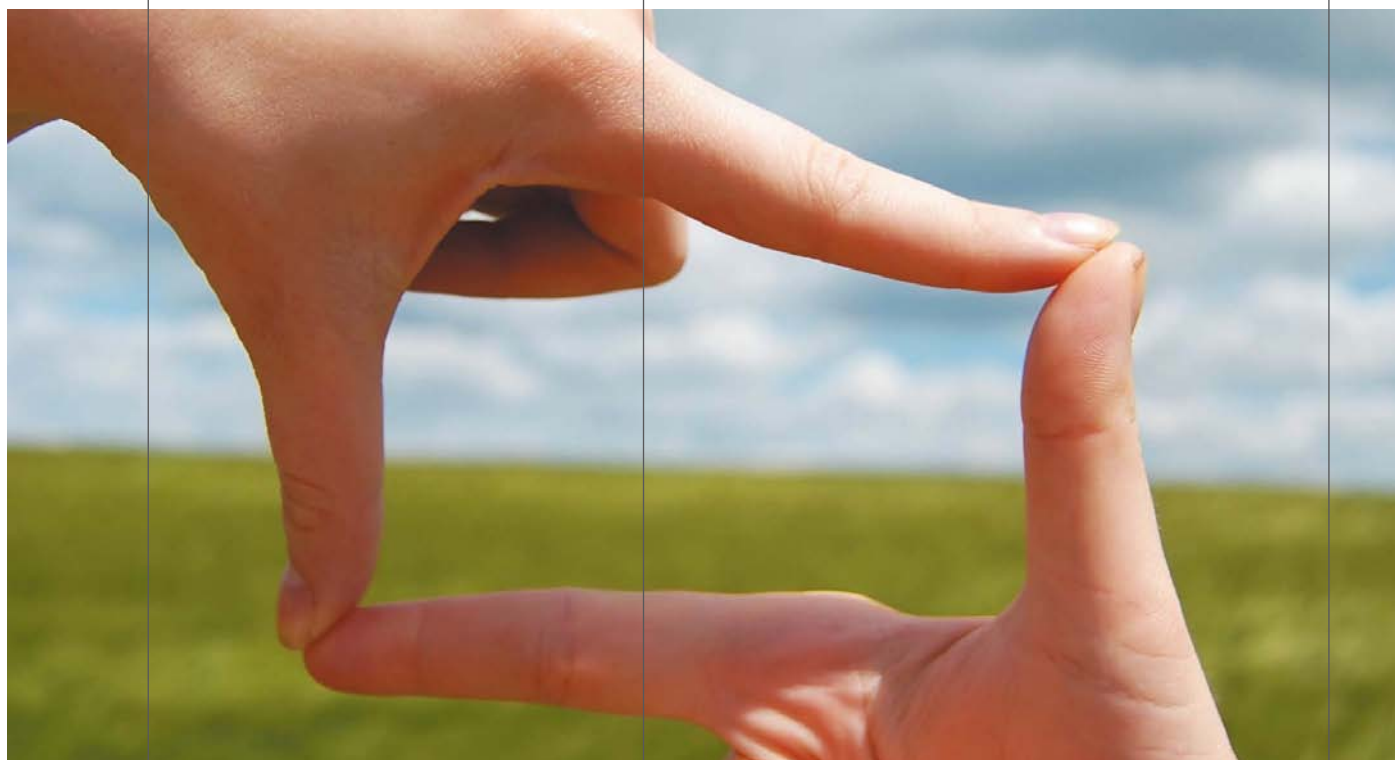


**access units**  
MOTION 868 MHz range

Applicable to doors  
roller · folding · sliding · swing · sectional  
guillotine · fast · glass · revolving · barriers  
posts

# ACCESS

868 MHz stand-alone  
access control



The Access group of products is characterised by its stand alone management, offering from one to four channels, 868 MHz radio receiver, display and buttons for user friendly management and off line event memory cards.

**jcmtechnologies**  
be a step ahead with technology and imagination



**ACCESS 500 · ACCESS 1000 · ACCESS 2000**



### Versatility

- Access control systems designed to respond to requirements regarding management in small and medium communal areas
- Station with 868 MHz receiver with inlet for 13.56 MHz (BUS-LIN) proximity readers.
- Possibility of using different elements activation (transmitters, transmitters with bi-technology, proximity keys and cards).
- Possibility of 4 output relays using expansion cards configurable in impulse or bi-stable mode with selector on the card itself. Antipanic function.
- Can be installed indoors and outdoors.
- The TSA card can act as an anti-panic card on ACCESS control stations (configurable with the ASSISTANT programming tool).
- Management of 1 to 4 doors.
- Management of up to 2,000 users (depending on the model).
- Password-protected access.

### Greater security

- High security rolling code system with more keying bits.

### Simplified community installation management

The following is available with the ASSISTANT programming tool:

- Database with all equipment, transmitters and proximity cards/tags provided in each installation.
- Possibility of assigning standby codes. Functional transmitters, cards and tags can be sold without having to visit the installation.
- Stolen or lost transmitters, cards and tags can be replaced by new, functional ones without having to visit the installation.
- Registrations via PIN, 1 4-digit code can be allocated to a receiver and all transmitters/proximity elements must have the same PIN to be programmed in the equipment. 2 PIN codes per transmitter is permitted. Also available with the PROGMAN portable programming tool.
- Possibility of personalising devices with the installer code.
- Configuration of equipment parameters such as forbidding the radio and manual programming of devices.

### Flexibility and speed when programming equipment

- The transmitters and proximity equipment are programmed by radio without mechanical contact.

### Great reliability and feeling of higher range for users

- With the APS (Approaching System) transmission system, the transmitter button can be pressed even outside the receiver range. The transmitter will repeatedly send the signal while the user approaches his garage door and until the door opens.

### Installer personalisation

- The first transmitter programmed in the equipment will be personalised with your installer code. Also Assistant and PROG-MAN programming tools can be used.

### Easy of use

- They simplify the work of the installer and reduce technical interventions and wiring work to a minimum (only 3 wires).

#### CONTROL UNITS



#### ACCESS 500

- 868MHz access control, 1 relay, 500 codes.
- Outlets: 1 impulse/bi-stable relay per control panel parameter menu (relay status can be modified using the ASSISTANT programming tool).
- Outlet expansion: 3 with TSA card.
- Possibility of using any channel as an anti-panic alarm (activating relay 4 as alarm triggering).
- Removable 500-code memory.
- Individual or group code registration and cancellation using the built-in keypad or ASSISTANT programmer.
- Internal 4-digit display.
- Password-protected access.
- Maximum 3 proximity readers connected directly to the equipment (BUS-LIN).
- BUS-LIN cable length: cable cross-sections 0.22/0.35/0.5 mm<sup>2</sup> up to 100/150/200 m, respectively. Category 5 cable.
- Up to 20 proximity readers in the same network using an external power supply (BUS-LIN).
- Includes clock and calendar to save the date and time if the event card is inserted.
- Power supply: 230Vac ±10%.
- Standby/Op. consumption 23mA / 42mA.
- Operating temperature -20°C a +85°C.
- Built-in antenna.
- IP54 (IP65 with gland).
- Size: 140 x 220 x 55 mm.



#### ACCESS 1000 · ACCESS 2000

- 868MHz access control, 2 relays, 1000 or 2000 codes.
- Outlets: 2 impulse/bi-stable relays per control panel parameter menu.
- Possibility of using any channel as an anti-panic alarm (activating any relay as an alarm activation).
- Removable 1000 or 2000-code memory.
- Individual or code group registrations and removals by keypad and front LCD or ASSISTANT programmer.
- Password-protected access.
- Maximum 5 proximity readers connected directly to the equipment (BUS-LIN).
- BUS-LIN cable length: cable cross-sections 0.22/0.35/0.5 mm<sup>2</sup> up to 100/150/200 m, respectively. Category 5 cable.
- Up to 20 proximity readers in the same network using an external power supply (BUS-LIN).
- Includes clock and calendar to save the date and time if the event card is inserted.
- Anti-passback/Anti-timeback.
- Kill-pass, validity date and discount functions through the proximity readers.
- Front cover with hinges to prevent it from falling in the event of opening.
- Power supply: dual 230Vac o 12Vac/dc.
- Standby/Op. consumption 27mA / 57mA a 230Vac - 150mA / 550mA to 12Vac/dc.
- Size: 220 x 220 x 75 mm.

#### ACCESSORIES

##### ACCESS 500

- EVENT1000.** Recovery card for the last 1000 events.
- MEM500C.** Removable 500-code memory card.
- TSA.** Relay card configurable in impulse or bi-stable model. It can also act as an anti-panic card (configurable by soft).
- AED868 · FLAT868 · ACTIVAGO · EVOProx · STEELProx -MOTION**

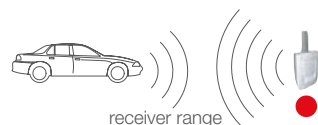
##### ACCESS1000/2000

- EVENT2000.** Recovery card for the last 2000 events.
- MEM1000.** Removable 1000-code memory card.
- MEM2000.** Removable 2000-code memory card.
- TSA.** Relay card configurable in impulse or bi-stable model. It can also act as an anti-panic card (configurable by soft).
- TAP MOTION.** Configurable anti-passback / anti-timeback card.
- AED868 · FLAT868 · ACTIVAGO · EVOProx · STEELProx -MOTION**

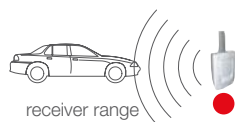
#### USEFUL FOR

Transmitters, transmitters with bi-technology, proximity 868 MHz tags and cards.

- 1 The user activates the transmitter outside the range.



- 2 Within 15 seconds he/she enters the range. The door remains closed.



- 3 The receiver receives the signal automatically without re-activating the transmitter and opens the door.



ACCESS500



ACCESS1000/2000

radio 868 MHz - 100 meters



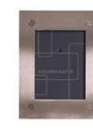
GOmini



GOPro - GOEvo



EVOProx



STEELProx

proximity  
13,56 MHz - 3 a 6 cm



GOEvo



ECOTag  
MOTIONTag  
EVOtag



MOTIONCard  
EVOCard