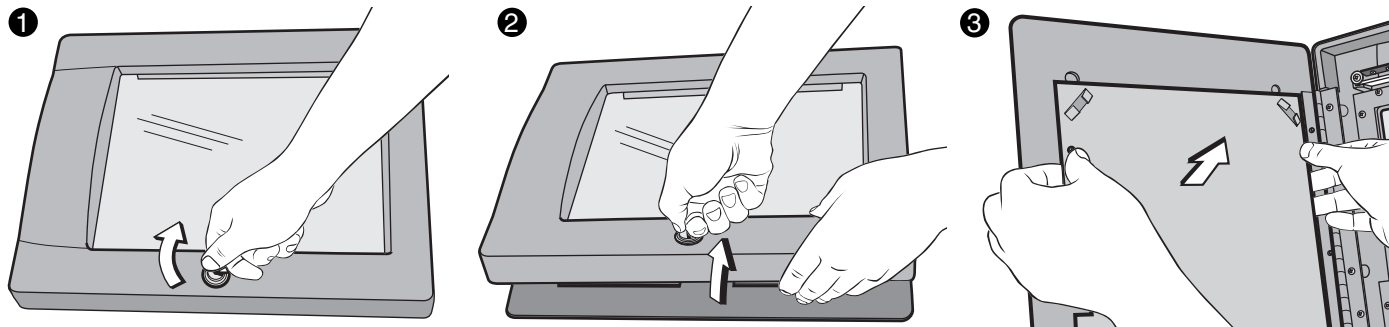
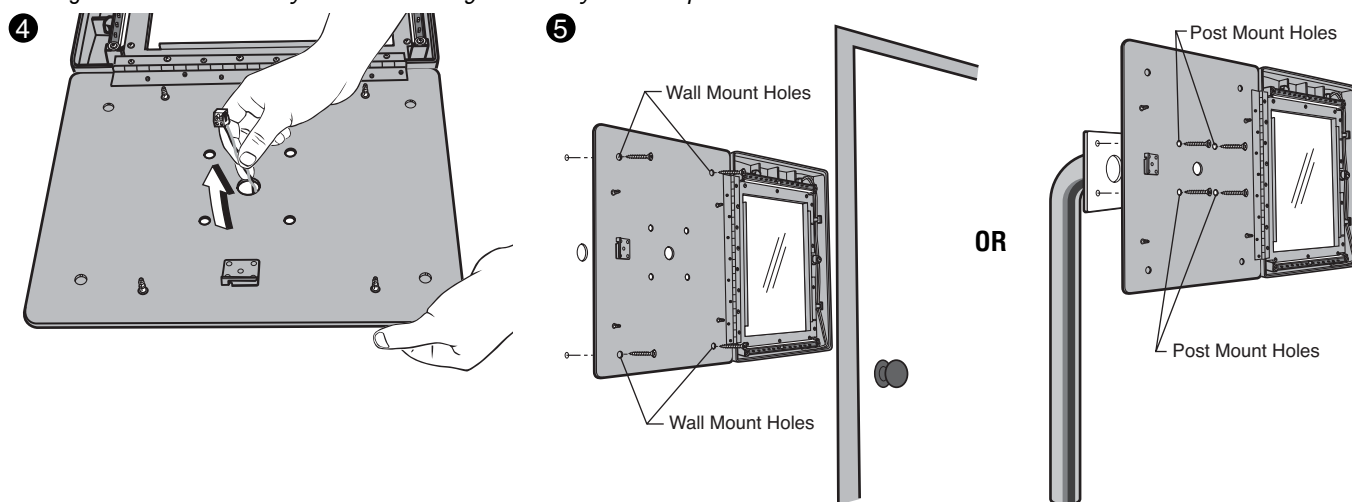


**How to Unlock, Open and Mount the Directory:**

To open, turn the key clockwise and lift the directory lid open. Remove Directory insert holding plate by pressing the retaining tabs while lifting on the plate.



**Mounting Directory:** Pull power supply wiring through center hole on the back of the directory. Mount directory to either a wall or a gooseneck. **NOTE:** If you are mounting to a wall you must punch out the wall mount holes.

**Connect Power and Insert Directory**

Connect power using the quick connect as shown. Insert directory into backing plate. Consult the Versa XS manual to print a paper directory listing. Install directory insert.

