

# LiftMaster<sup>®</sup>

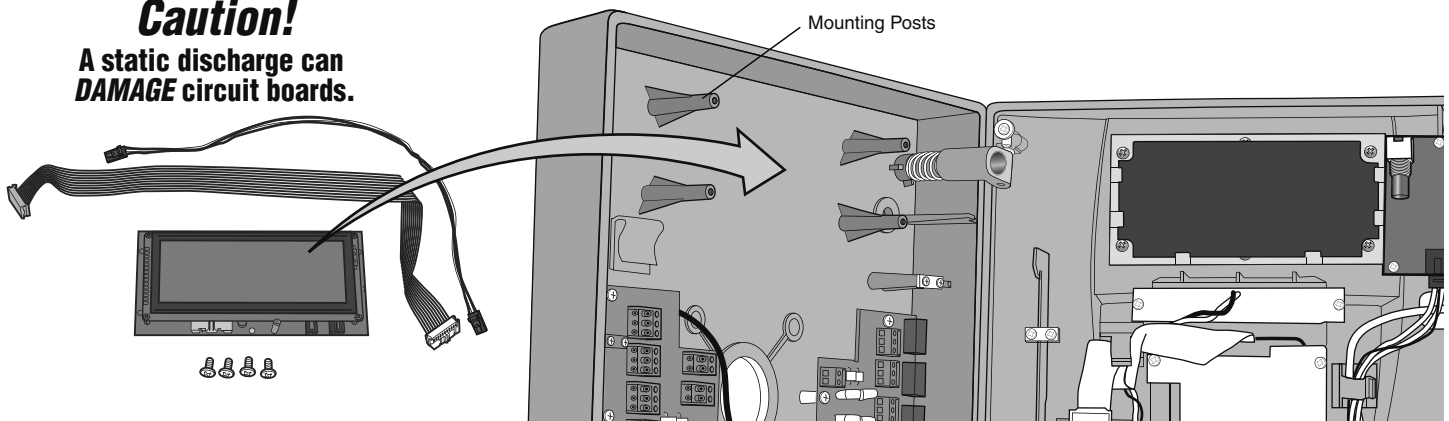
## ELITE SERIES<sup>®</sup>

## LCD KIT INSTALLATION

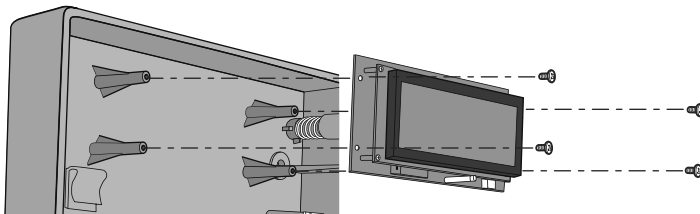
For the EL2000 Telephone Entry/Access Control System  
Model ELLCDKT

### Caution!

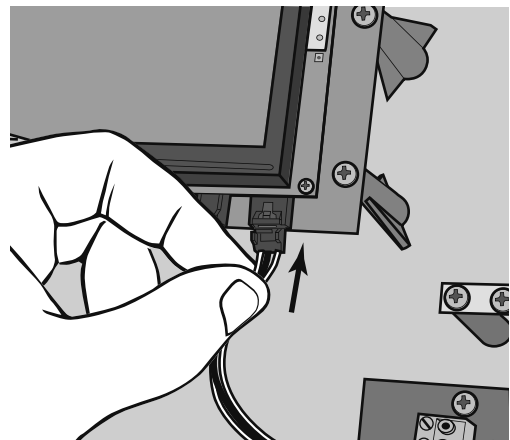
A static discharge can  
**DAMAGE** circuit boards.



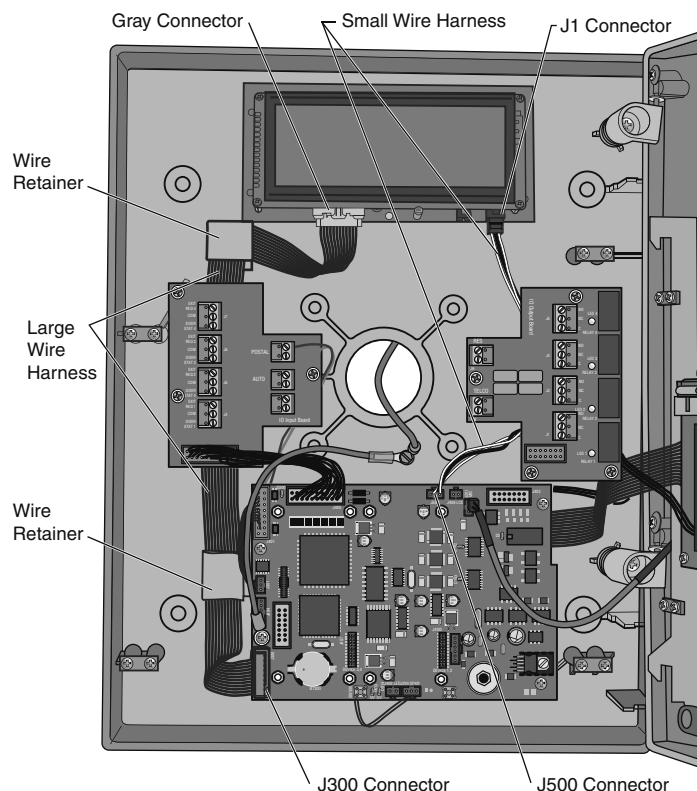
- ❶ **Disconnect power to the unit!**
- ❷ Unlock and open the unit.
- ❸ Install LCD onto the four mounting posts.



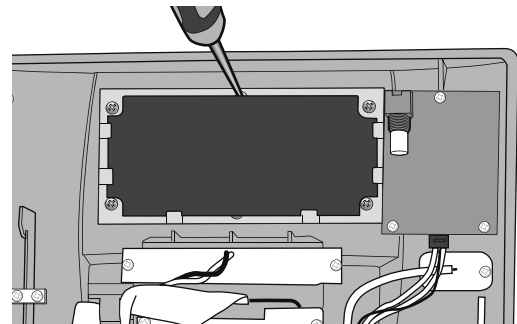
- ❹ Plug the small harness into the J1 connector on the LCD board and into J500 connector on the main board.
- ❺ Plug the large harness into the Gray connector on the LCD board and into J300 connector on the main board.



- ❻ Route the wire harnesses as shown, running them beneath the input and output boards.
- ❼ Slip the larger harness into the two wire retainers.



- ❽ Pop black lens out of clear lens and discard.



- ❾ Close and lock the unit. Connect power.