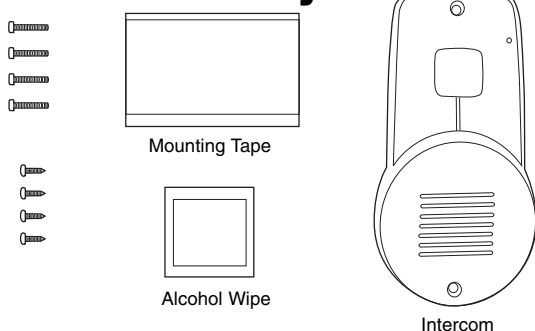


Overview

The Intercom allows multiple simultaneous conversations, using a 900 Mhz secure digital radio link. The intercoms form an exclusive network and respond only to other intercoms in the network. The Intercom is compatible with various Liftmaster Wireless Products.

NOTE: The intercom cannot be used as a control device.

Carton Inventory

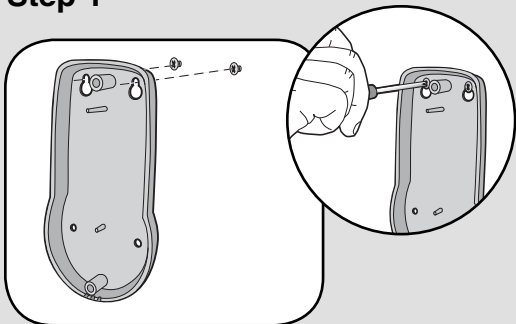


Installation

The intercom can be mounted by using the included screws or by using the double-sided mounting tape. It is recommended to use the mounting tape on surfaces such as metal or glass.

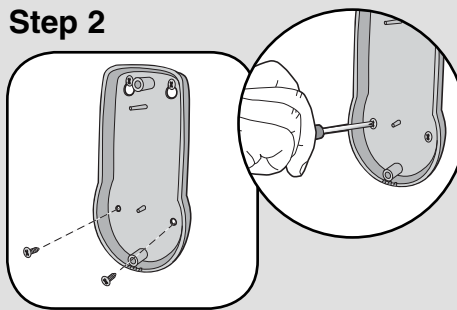
Mounting with Screws

Step 1



Mount intercom with small silver screws. Screw the top two screws halfway into the mounting surface. Place back of intercom over screws. Tighten screws. Refer to page 3 for mounting template.

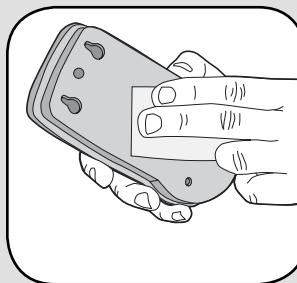
Step 2



Put the remaining silver screws into the bottom holes of intercom. Tighten screws.

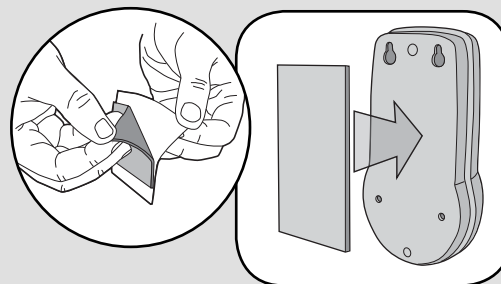
Mounting with Tape

Step 1



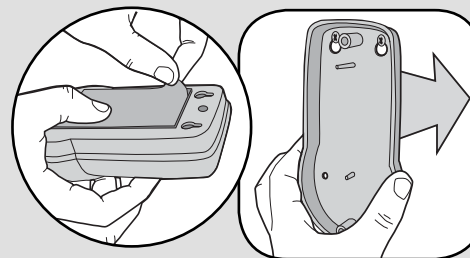
Clean back of intercom and mounting surface using the alcohol wipe.

Step 2



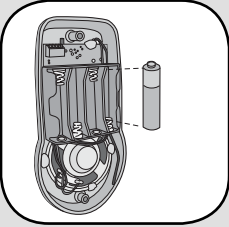
Peel off white paper from mounting tape. Firmly press mounting tape on back of intercom.

Step 3



Peel paper from mounting tape. Firmly press intercom onto mounting surface.

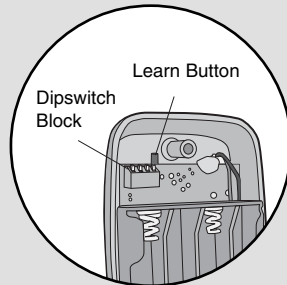
Assemble



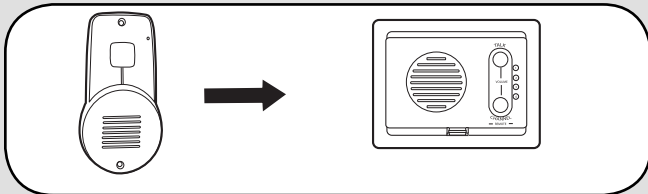
Install 4 AA Alkaline batteries (not provided). (Lithium batteries recommended for colder environments.)

Program

The intercom must be programmed to at least one other intercom or Telephone Interface Unit (OTIU) to become a network or it can be programmed into an existing network.



Flush Mount Intercom



Step 1: Press and hold both buttons on the Flush Mount Intercom for 3 seconds. The LEDs will flash.

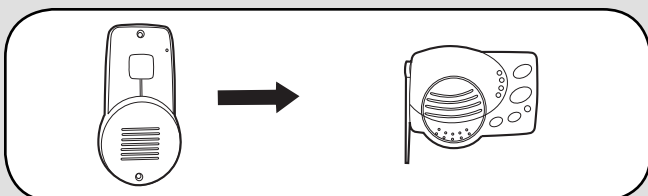
Step 2: Within 15 seconds, press the Learn button on Door Intercom until a beep is heard. The Flush Mount Intercom will beep indicating programming is successful.

NOTES:

- Program all other intercoms to the Flush Mount Intercom, not the Door Intercom.
- To clear Flush Mount memory, press and hold both buttons. Two beeps will be heard and the channel lights will begin to cycle. Continue to hold until a third beep is heard (about 15 seconds). Ensure other intercoms are not activated during this time. Intercoms in the network that are on will signal during the clearing process. Once memory is clear the intercom can be programmed to a new network.

Proceed to Operation.

Portable Intercom



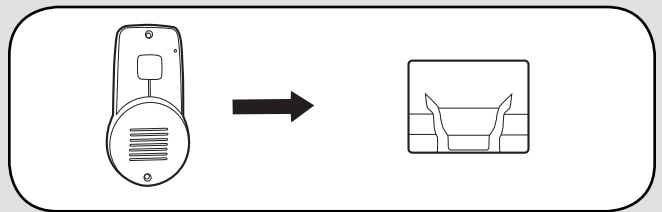
Step 1: Press and release the Learn Button on the Access Portable Intercom.

Step 2: Within 15 seconds, press the Learn button on Door Intercom until a beep is heard. The Portable Intercom will beep indicating programming is successful.

NOTES:

- Program all other intercoms to the Portable Intercom, not the Door Intercom.
 - To clear Portable Intercom memory, press and hold Learn button, an initial beep will be heard. Continue to hold until a second beep is heard (about 15 seconds). Ensure other intercoms are not activated during this time. Intercoms in the network that are on will signal during the clearing process. Once memory is clear the intercom can be programmed to a new network.
- Proceed to Operation.

Telephone Interface Unit (OTIU & MUOTIU)

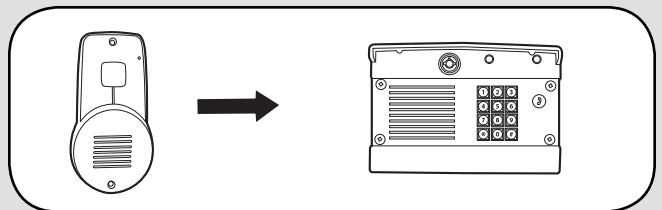


Step 1: On the phone connected to the OTIU, press “**07” after hearing the dial tone. Hang up and Learn LED will flash for 15 seconds.

Step 2: Within 20 seconds, press and release the Learn button on the intercom. The OTIU will ring the telephone and Caller ID will display “Unit Learned”.

NOTE: To clear the memory on the OTIU, lift the handset on the telephone and wait for a dial tone. Press dial “**#8” and the telephone will respond with a double beep. Memory is cleared. Proceed to Operation.

Gate Access Panel (GAPLM)



Step 1: Set Dipswitch #1 to the UP position on intercom.

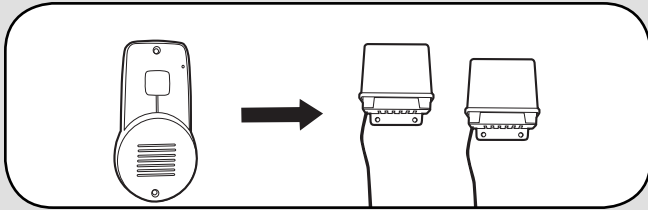
Step 2: Press the Learn button on the Passive Intercom until a beep is heard.

Step 3: Within 20 seconds, enter Master PIN Number on GAPLM.

Step 4: Press “05” and GAPLM will beep.

Step 5: Press the Call button on the intercom. Intercom will beep indicating programming is successful.

Repeater Set



NOTE: Repeaters are optional and should be used only if there is a problem with range.

Step 1: Press the Learn button on the Intercom until a beep is heard.

Step 1: Within 15 seconds, press Learn button on **ONE** Repeater. LED will light.

NOTE: If Repeaters have not been programmed into a network, see Repeater manual for programming instructions.

Operation

Talk Button: To talk, hold down the Talk button and all intercoms in the network will receive the signal. When holding down the Talk button on a different intercom, a secure channel is created and the other intercoms in the network do not hear the conversation.

Clear Memory: Press and hold Learn button, an initial beep will be heard. Continue to hold until a second beep is heard (about 15 seconds). If an intercom signals during clearing mode, the process will have to be repeated. Once memory is clear the intercom can be programmed to a new network.

Battery: The AA Alkaline batteries (not provided) will last up to a year depending on use (Lithium batteries recommended for colder environments).

Switch 1: Switch 1 sets the Active or Passive Mode. If the intercom is in Active Mode, only one other Passive device may be added to the network.

If the intercom is in Passive Mode, the Active device defines the number of additional devices that can be added to the network (refer to the Active device owner's manual for the maximum number of additional devices).

Default is Active.



Switch 2: Switch 2 is the device identifier. When the intercom is programmed into a network, the switch 2 setting will produce a different chime pattern.

When the intercom is networked with an OTIU, switch 2 setting determines the information displayed in the telephone's call ID display.



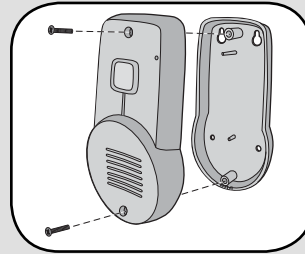
Switch 3: Switch 3 controls Intercom sensitivity. To increase sensitivity on the intercom set Dipswitch #3 to OFF.



Switch 4: Switch 4 controls volume. To increase the intercom volume, set

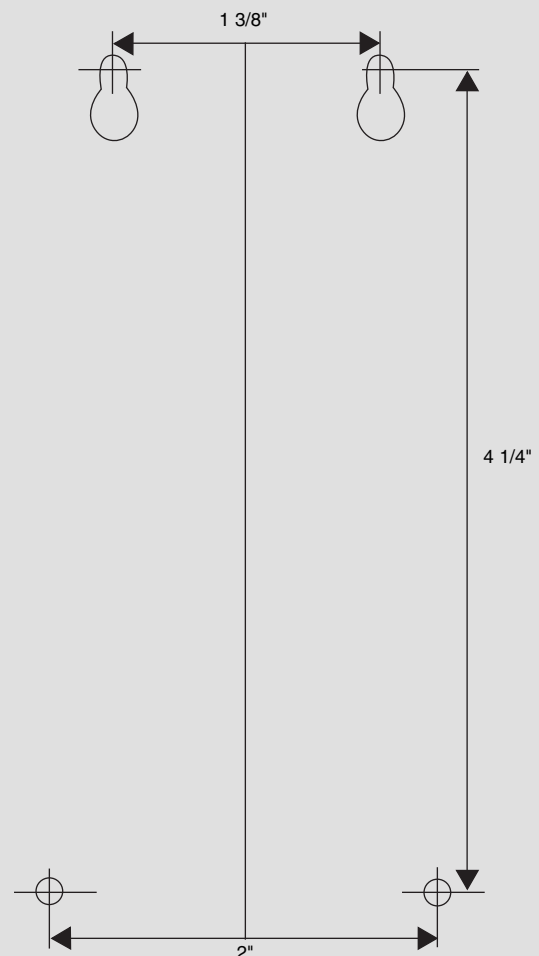


Secure Cover



Secure cover with the two large black screws.

Mounting Template



Troubleshooting

Intercom does not function.

Check batteries in Intercom. When the Talk button is pressed a tone should be heard.
Ensure Intercom is connected to a network.
See *Program*.

Intercom is not getting expected transmission range.

Keep Intercom away from trees, metal objects and electrical wiring. Do not mount intercom on a tree, masonry, or metal surface. When used in buildings with stucco or cement walls, the range is greatly reduced.
Repeaters can be used close to the building to solve this problem.

Intercom beeps every ten minutes.

The battery is low in the intercom. Replace with AA Alkaline batteries.

Need to clear intercom's memory.

Press and hold Learn button, an initial beep will be heard. Continue to hold until a second beep is heard (about 15 seconds). If an intercom signals during clearing mode, the process will have to be repeated. Once memory is clear the intercom can be programmed to a new network.

NOTE: *If Intercom is in Active Mode there is no need to clear memory.*

FOR TECHNICAL SUPPORT DIAL OUR TOLL FREE NUMBER:

1-800-528-2806

www.liftmaster.com

NOTICE: To comply with FCC and or Industry Canada rules (IC), adjustment or modifications of this receiver and/or transmitter are prohibited, except for changing the code setting or replacing the battery. THERE ARE NO OTHER USER SERVICEABLE PARTS.
Tested to Comply with FCC Standards FOR HOME OR OFFICE USE. Operation is subject to the following two conditions: (1) this device may not cause harmful interference, and (2) this device must accept any interference received, including interference that may cause undesired operation.