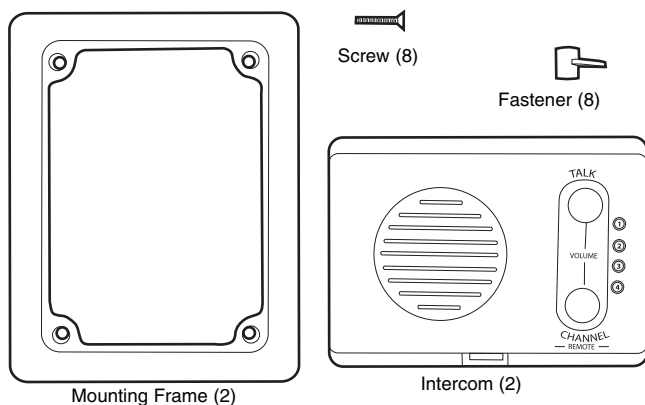


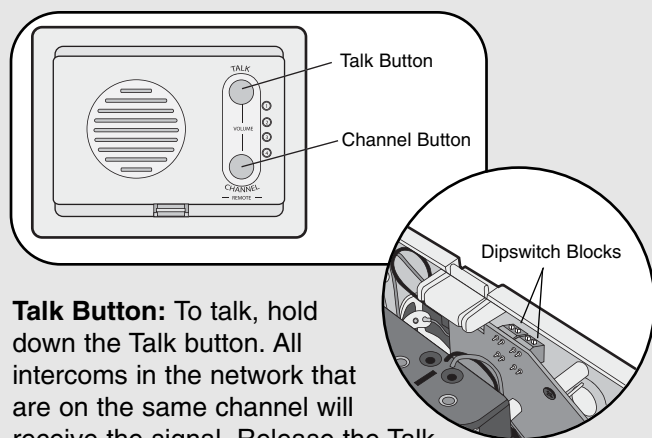
## Overview

The Intercom allows multiple simultaneous conversations, using a 900 Mhz secure digital radio link. The intercoms form an exclusive network and respond only to other intercoms in the network.

## Carton Inventory



## Operation & Features



**Talk Button:** To talk, hold down the Talk button. All intercoms in the network that are on the same channel will receive the signal. Release the Talk button when done talking and within 10-15 seconds press and hold the Talk button of a different intercom to make a secure channel between the two. Once the channel is made the other intercoms in the network cannot hear the conversation.

**Volume:** Hold down the Talk button and press the Channel button repeatedly to cycle through the volume levels.

**Battery:** When batteries are low intercom will emit two beeps every ten minutes. Replace with C batteries (not provided).

**NOTE:** To prevent damage to the circuit **DO NOT** use C size Lithium batteries.

**Channel Selection:** Press the Channel button to set intercom to one of four secure channels or the paging channel. The default channel for the intercom is the Paging channel where all four channel lights will flash in sequence. An intercom on a channel can only hear an intercom on the same channel or on the Paging channel.

**Command Gate:** A gate can be opened with a call from an intercom. When an intercom has been activated by another intercom, the talk button can be pressed to secure a channel to the gate. To allow access from the gate, press and release the Remote button to open the gate.

The gate can also be opened without a call from an intercom. Press and hold the Remote button and an initial beep will be heard. Continue to hold until a second beep is heard, then release.

If pressing the Remote button did not open the gate, a siren noise will be heard. No siren noise indicates a successful signal transmission.

**Switch Settings:** Switch #1 and #2 determine which GCU the intercom will activate. Default Identity is #1 (both Dipswitches DOWN).

SW1: GCU Mode (see chart below for setting)

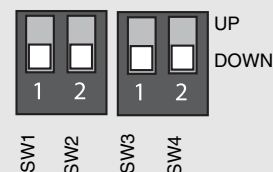
SW2: GCU Mode (see chart below for setting)

SW3: Conference Mode (UP is Conference Mode, DOWN is Secure Mode)

SW4: Not used. Leave in default position (DOWN). Default for all switches is DOWN.

**NOTE:** The following step applies only if more than one GCU is being used.

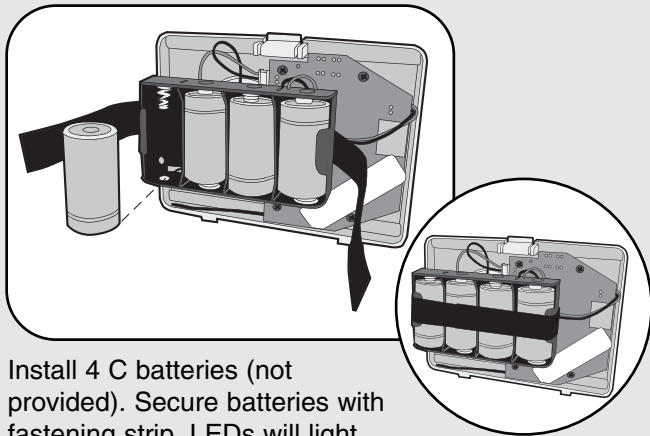
Up to four GCUs can be used. Each GCU will have a different Identity. Set the Identity of the GCU by changing the Dipswitches as shown in the chart below.



GCU Identity	SW1	SW2
1	OFF	OFF
2	ON	OFF
3	OFF	ON
4	ON	ON

**Conference Mode:** Conference Mode allows multiple intercoms to participate in a call compared to Secure Mode in which only two intercoms communicate. To put intercom in Conference Mode set SW3 to UP position. Any number of intercoms can be set to Conference Mode.

## Assembly



Install 4 C batteries (not provided). Secure batteries with fastening strip. LEDs will light.

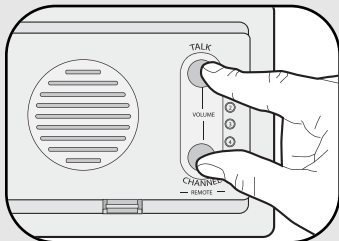
### NOTES:

- Ensure that the batteries are securely fastened or they may fall out during installation.
- To prevent damage to the circuit **DO NOT** use C size Lithium batteries.

## Program

The intercom must be programmed to at least one other intercom to become a network or it can be programmed into an existing network.

### Create New Network

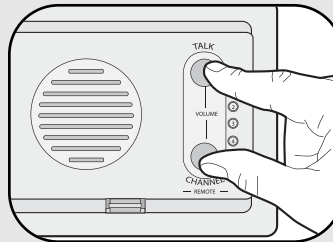


Press and hold both buttons on the intercom for 5 seconds. An initial beep will be heard followed by a second beep. The channel lights will flash. Within 10 seconds put the second intercom into Learn Mode (refer to table below).

INTERCOM	LEARN MODE
OR	Press the Learn button until a beep is heard.
	Press and hold both buttons for 5 seconds.

Each intercom will emit a tone when programmed into network. Repeat for any additional intercoms.

## Add to an Existing Network

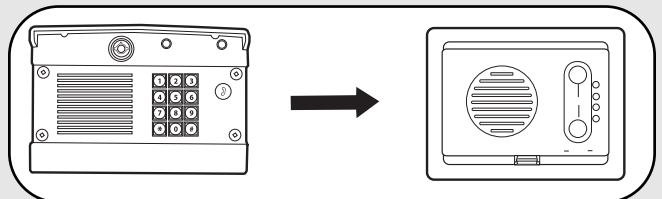


Press and hold both buttons on the new intercom for 5 seconds. An initial beep will be heard followed by a second beep. The channel lights will flash. Within 10 seconds put any networked intercom into Learn Mode (refer to table below).

INTERCOM	LEARN MODE
OR	Press the Learn button until a beep is heard.
	Press and hold both buttons for 5 seconds.

Each intercom will emit a tone when programmed into network. Repeat for any additional intercoms.

### Program to Gate Access Panel (GAPLM)



**Step 1:** Press and hold both buttons on the intercom for 5 seconds. The LEDs will flash.

**Step 2:** Within 20 seconds, enter Master PIN Number on GAPLM.

**Step 3:** Press "05" and GAPLM will beep indicating programming is successful. When the Call Button is pressed on the GAPLM, the intercom will beep for 40 seconds. During this time, the intercom will **ONLY** connect to the GAPLM. Hold down the Talk Button on the intercom to speak to the visitor. Release the Talk button to hear the response. This will be a secure conversation and other intercoms will be locked out.

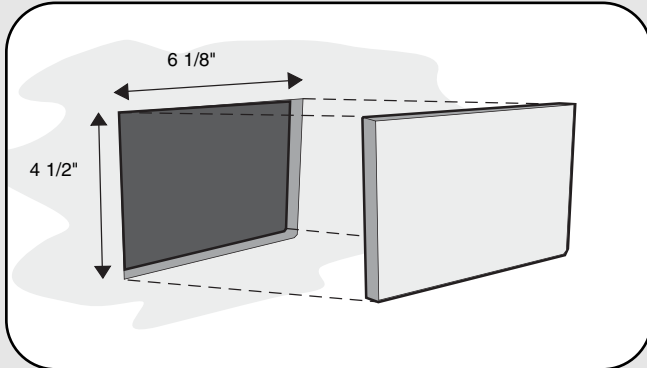
## Installation

### Step 1

Choose mounting locations where both intercoms will work when tested.

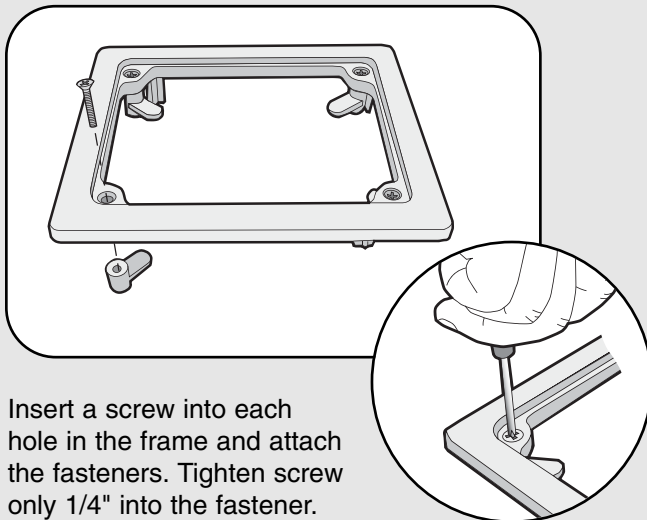
#### NOTES:

- The wall location should be clear of beams and other obstructions inside the wall.
- Do not mount intercoms within 6' of each other.
- Do not mount intercom near any electrical wiring or electrical devices.



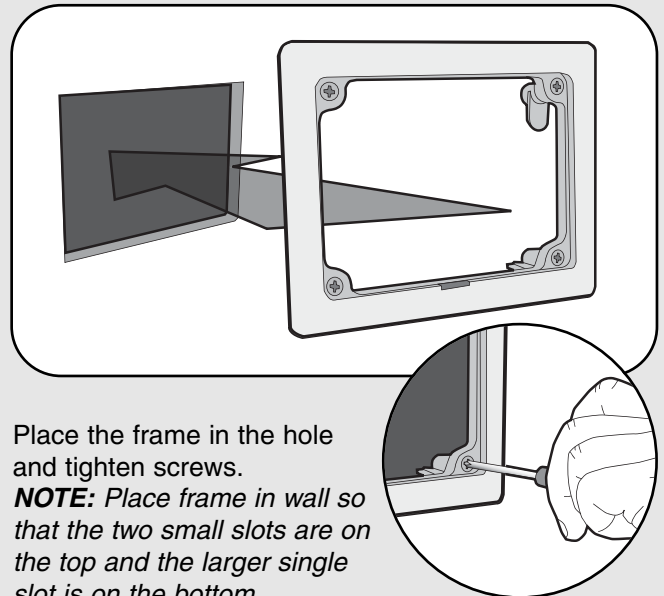
Cut a hole in the wall measuring 6 1/8" wide by 4 1/2" high.

### Step 2



Insert a screw into each hole in the frame and attach the fasteners. Tighten screw only 1/4" into the fastener.

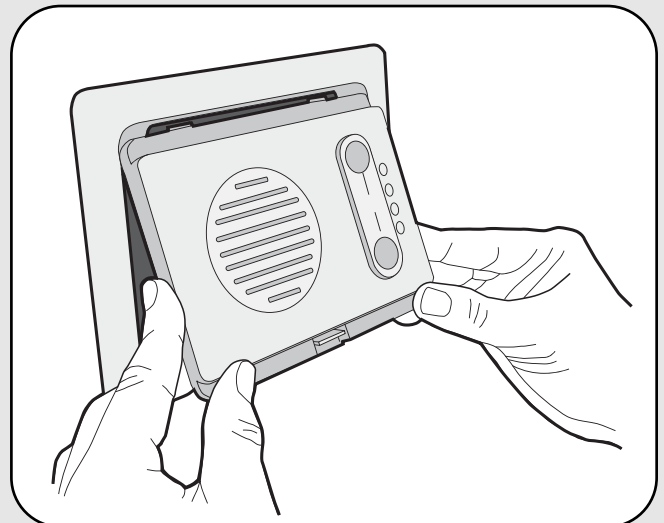
### Step 3



Place the frame in the hole and tighten screws.

**NOTE:** Place frame in wall so that the two small slots are on the top and the larger single slot is on the bottom.

### Step 4



Place intercom in frame by inserting top section first, then snapping the lower section into place.

## Troubleshooting

### Intercom does not function.

It is normal for LEDs to go out if intercom has been inactive for 5 minutes. The LEDs should light after a button is pressed or a signal is received.

Check batteries in Intercom.

Ensure intercom is connected to a network.

See *Program*.

Ensure that intercoms are on the same channel. See *Operation & Features*.

### Intercom is not getting expected transmission range.

Keep Intercom away from trees, metal objects and electrical wiring.

### Intercom does not activate the gate.

If there is no communication between the intercom and a primary device (like the GAPLM), the Channel Light on the intercom will light solid for 10 seconds without any additional audio warnings.

Relocate the intercom or primary device or use repeaters to complete radio link.

### Intercom emits a siren noise after Remote button is activated.

Verify the GCU is within range of the intercom or intercom systems. Repeaters may be required to allow intercoms to communicate with the GCU.

Replace batteries in the GCU.

### Intercom beeps every ten minutes.

The battery is low in the intercom. Replace with C batteries.

**NOTE:** To prevent damage to the circuit **DO NOT** use C size Lithium batteries.

### Need to clear intercom's memory.

Press and hold both buttons. Two beeps will be heard and the channel lights will begin to cycle. Continue to hold until a third beep is heard (about 15 seconds).

Ensure other intercoms are not activated during this time. Intercoms in the network that are on will signal during the clearing process. Once memory is clear the intercom can be programmed to a new network.

### Static and feedback is heard in intercom.

The intercoms are too close to each other. A cordless phone, cell phone, or other radio devices can also cause static.

**FOR TECHNICAL SUPPORT DIAL OUR TOLL FREE NUMBER:**

**1-800-528-2806**

**[www.liftmaster.com](http://www.liftmaster.com)**

NOTICE: To comply with FCC and or Industry Canada rules (IC), adjustment or modifications of this receiver and/or transmitter are prohibited, except for changing the code setting or replacing the battery. THERE ARE NO OTHER USER SERVICEABLE PARTS.

Tested to Comply with FCC Standards FOR HOME OR OFFICE USE. Operation is subject to the following two conditions: (1) this device may not cause harmful interference, and (2) this device must accept any interference received, including interference that may cause undesired operation.